

1D \ 2D



# M2-BG

Durable 2D Wireless Barcode Scanner

## • Excellent Identification Ability

High performance scanning module, easily decode all common 1D and 2D symbologies, have good performance in scanning fuzzy, low printed contrast rate and damaged barcode.

## • Long Service Life

Scan button with over 30 million times operation, and adopted ultra low power consumption.

## • Super Easy Operation and Compatibility

Compatible with multiple language and keyboard layout, work well with Android, Linux, Mac, Windows and other operating system.

## • Ultra-long Distance Data Transmission

2.4G(100m) and Bluetooth(30m) long distance data transmission, supports automatic frequency modulation and inventory mode.

## • Industrial Grade Durability

IP54 industrial grade, and bear the height of 1.5m dropping and ground impact.

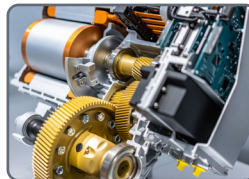
### Healthcare



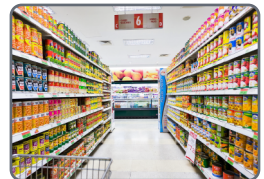
### Logistics



### Manufacturing



### Retailing



M2-BG is an industrial grade 2D optical image scanner. It delivers industrial leading performance and durability in Retail, Logistics, Manufacturing, Medical store, Warehouse and other fields of applications.

## TECHNICAL SPECIFICATIONS

### Performance Parameters

Light source	(610-640nm) for aiming
Image sensor	CMOS
Resolution	640x480 pixels
Decode capability	1D: UPC/EAN, UPC/EAN with supplements, ISBN/ISSN, UCC, Code 128, Code 39, Code 39 (Full ASCII), code 32, Interleaved 2 of 5, Matrix 2 of 5, Discrete 2 of 5, Codabar, MSI/Plessey, Chinese 2 of 5, China Postal Code, GS1 DataBar, etc. 2D: PDF417, Micro PDF417, Data Matrix, QR, Micro QR, Aztec, etc.
Scan Angle	±360°, ±60°, ±55° (Roll, Skew, Pitch)
Scan precision	≥4mil
Print contrast	20%
Prompt mode	Buzzer, LED indicator light
Interface	USB, USB-COM
Trigger mode	Manual, Continuous automatic scan and auto sensing scanning [optional]
Memory	2MB
Battery	2000mAh (charging time is 5.0h)
Current and voltage	65mA (standby), 195mA (working), 5 VDC ±10%
Work frequency	2.4GHz
Data communication distance	100m (2.4GHz) 30m(Bluetooth)(open area)
Setting method	Scan configuration barcode

### Physical Parameters

Over dimension	L X W X H (110x70x155mm)
Weight	170g (excluding cable)
Material	ABS+PC environmentally friendly materials

### Environmental Parameters

Working temperature	-20°C to 50°C
Storage temperature	-40°C to 60°C
Anti-drop	Withstand drop from 1.5m to concrete floor
Humidity	5% to 95% RH
IP grade	IP54
Circumstance luminance	0-100,000Lux