

1D \ 2D



M2

Durable 2D Barcode Scanner

• Excellent Identification Ability

High performance scanning module, easily decode all common 1D and 2D symbologies, have good performance in scanning fuzzy, low printed contrast rate and damaged barcode.

• Long Service Life

Scan button with over 30 million times operation, and adopted ultra low power consumption.

• Super Easy Operation and Compatibility

Compatible with multiple language and keyboard layout, work well with Android, Linux, Mac, Windows and other operating system.

• High Quality

Adopt high quality wires and inflaming retarding materials with the international standard, recyclable and practical shell to protect the device.

• Industrial Grade Durability

IP54 industrial grade, and bear the height of 2.0m dropping and ground impact.

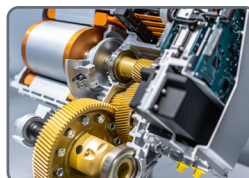
Healthcare



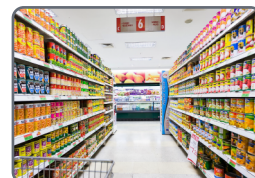
Logistics



Manufacturing



Retailing



M2 is an industrial grade 2D optical image scanner. It delivers industrial leading performance and durability in Retail, logistics, Manufacturing, Medical store, Warehouse and other fields of applications.

TECHNICAL SPECIFICATIONS

Performance Parameters

Light source	[610-640nm] for aiming
Image sensor	CMOS
Resolution	640x480 pixels
Decode capability	1D: UPC/EAN, UPC/EAN with supplements, ISBN/ISSN, UCC, Code 128, Code 39, Code 39 (Full ASCII), code 32, Interleaved 2 of 5, Matrix 2 of 5, Discrete 2 of 5, Codabar, MSI/Plessey, Chinese 2 of 5, China Postal Code, GS1 DataBar, etc. 2D: PDF417, Micro PDF417, Data Matrix, QR, Micro QR, Aztec, etc.
Scan Angle	±360°, ±60°, ±55° (Roll, Skew, Pitch)
Scan precision	≥4mil
Print contrast	20%
Prompt mode	Buzzer, LED indicator light
Interface	USB, USB-COM, RS232 (optional)
Trigger mode	Manual, Continuous automatic scan and auto sensing scanning (optional)
Setting method	Scan configuration barcode
Current and voltage	55mA (standby), 165mA (working), 5 VDC ±10%

Physical Parameters

Over dimension	L X W X H (110x70x155mm)
Weight	195g (including cable)
Material	ABS+PC environmentally friendly materials

Environmental Parameters

Working temperature	-20°C to 50°C
Storage temperature	-40°C to 60°C
Anti-drop	Withstand drop from 2.0m to concrete floor
Humidity	5% to 95% RH
IP grade	IP54
Circumstance luminance	0-100,000Lux