

1D \ 2D



# PB02

## 2D Scanner Payment Box

### • Excellent Identification Ability

High performance scanning module, easily decode common 1D and 2D payment symbologies, have good performance in scanning printed and on-screen barcode.

### • Super Easy Operation and Compatibility

Easy compatible with multiple language, keyboard layout and operating system. work well with Android, Linux, Mac, Windows and other operating system.

### • Automatic Interface Detection

Enable the scanner to configure appropriate interface once connected, avoid the tedious task of scanning programming.

### • High Quality

Adopt high quality wires and inflaming retarding materials with the international standard, recyclable and practical shell to protect the device.

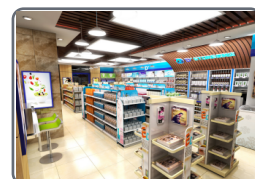
### • Industrial Grade Durability

IP54 industrial grade, and bear the height of 1.5m dropping and ground impact.

### Healthcare



### Retail Store



### Catering



### Supermarket



PB02 2D scanner payment box, integrated with our core barcode technology, has superior barcode decoding performance, with good performance in reading screen and printed barcode. Designed for Retail, Medical store, catering and other industries.

## TECHNICAL SPECIFICATIONS

### Performance Parameters

Light source	6500K LED for lighting
Image sensor	CMOS
Resolution	640x480 pixels
Processor	ARM 32 bit
Decode capability	1D: UPC-A, UPC-E, EAN-8, EAN-13, Code 128, Code 39, Code32, Code 93, Code 11, Codabar, Interleaved 2 of 5, Matrix 2 of 5, Industrial 2 of 5, Standard 2 of 5. 2D: QR code
Depth of filed	10-350mm
Scan Angle	±360°, ±55°, ±55° (Roll, Skew, Pitch)
Field of view	86°*58°
Scan precision	≥4mil
Print contrast	20%
Prompt mode	Buzzer
Data communication method	USB, USB-COM
Trigger mode	Auto sensing continuous scanning
Setting method	Scan configuration barcode
Current and voltage	50mA (standby), 105mA (working), 5 VDC ±10%

### Physical Parameters

Over dimension	L X W X H (127x89x85mm)
Weight	210g
Material	ABS+PC environmentally friendly materials

### Environmental Parameters

Working temperature	-20°C to 50°C
Storage temperature	-40°C to 60°C
Anti-drop	Withstand drop from 1.5m to concrete floor
Humidity	5% to 95% RH
IP grade	IP54
Circumstance luminance	0-100,000Lux