

1D \ 2D



T2BG-CS

Industrial 2D Wireless Barcode Scanner

• Ultra-long Distance Data Transmission

2.4GHz(100m) and Bluetooth(30m) long distance data transmission, supports automatic frequency modulation and inventory mode, and has 2MB memory to save data information.

• Highly accurate and fast scanning

High performance scanning module, easily decode all common 1D and 2D symbologies, have good performance in scanning fuzzy, low printed contrast rate and damaged barcode.

• Powerful Endurance Ability

2000mAh rechargeable polymer lithium battery, make device could continuously work for more than 20 hours with the fully charged.

• Super Easy Operation and Compatibility

Compatible with multiple language and keyboard layout, work well with Android, Linux, Mac, Windows and other operating system.

• Industrial Durability and Sealing Performance

IP54 industrial sealing grade, and bear the height of 1.5m dropping and ground impact.

Healthcare



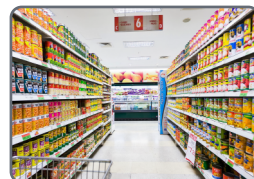
Logistics



Manufacturing



Retailing



T2BG-CS with professional high-performance image scan engine, and take Bluetooth and 2.4GHz wireless technology, with cradle for charging and receiving 2.4GHz data. Easily read printed and on-screen 1D and 2D symbology. It designed for retail, logistics, manufacturing, healthcare, warehouse, etc.

TECHNICAL SPECIFICATIONS

Performance Parameters

Light source	5600K LED for lighting
Image sensor	CMOS, 1280x800/640x480 pixles
Screen	1.77 inch, 128x160 pixels
Decode capability	1D: UPC/EAN, UPC/EAN with supplements, ISBN/ISSN, UCC, Code 128, Code 39, Code 39 (Full ASCII), code 32, Interleaved 2of 5, Matrix 2 of 5, Discrete 2 of 5, Codabar, MSI/Plessey, Chinese 2 of 5, China Postal Code, GS1 DataBar, etc. 2D: PDF417, Micro PDF417, Data Matrix, QR, Micro QR, Aztec, etc.
Scan Angle	±360°, ±60°, ±65° (Roll, Skew, Pitch)
Scan precision	≥4mil
Print contrast	20%
Prompt mode	Buzzer, LED indicator light
Interface	USB, USB-COM
Trigger mode	Manual, Continuous automatic scan and auto sensing scanning [optional]
Memory	2MB
Battery	2000mAh (charging time is 4.5h)
Current and voltage	120mA (standby), 385mA (working), 5 VDC ±10%
Work frequency	2.4GHz
Data communication distance	100m(2.4GHz) and 30m(Bluetooth) (open area)
Setting method	Scanner's OS or scan configuration barcode

Physical Parameters

Over dimension	L X W X H (185x101x70mm)Scanner/85x80x125mm(Cradle))
Weight	210g (Scanner), 120g (Cradle)
Material	ABS+PC environmentally friendly materials

Environmental Parameters

Working temperature	-20°C to 50°C
Storage temperature	-40°C to 60°C
Anti-drop	Withstand drop from 1.5 m to concrete floor
Humidity	5% to 95% RH
IP grade	IP54
Circumstance luminance	0-100,000Lux