

1D \ 2D



# I2BG-UHF

Superior 2D Wireless UHF RFID Barcode Scanner

## • Ultra-long Distance Data Transmission

100m(2.4G) and 30m(Bluetooth) long distance data transmission, supports automatic frequency modulation and inventory mode, and has large memory to save data information.

## • Highly Accurate and Fast Scanning

High performance UHF RFID and barcode scanning module, easily decode and read UHF RFID tag and all common 1D and 2D symbologies.

## • Powerful Endurance Ability

5000mAh rechargeable polymer lithium battery, make device could continuously work for more than 30 hours with the fully charged.

## • Super Easy Operation and Compatibility

Compatible with multiple language and keyboard layout, work well with Android, Linux, Mac, Windows and other operating system.

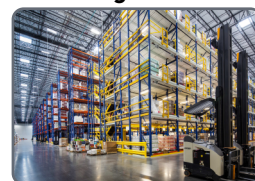
## • Industrial Durability and Sealing Performance

IP54 industrial sealing grade, and bear the height of 1.5m dropping and ground impact.

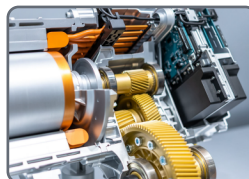
### Healthcare



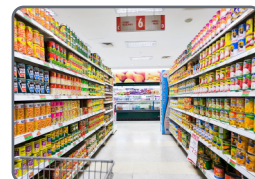
### Logistics



### Manufacturing



### Retailing



I2BG-UHF with professional high-performance image scan engine and UHF RFID reader, and take 2.4GHz and Bluetooth wireless technology, with 2.4GHz data receiver. It designed for retail, logistics, manufacturing, healthcare, warehouse, etc.

## TECHNICAL SPECIFICATIONS

### Performance Parameters

Image sensor	CMOS
Resolution	1280x800/640*480 pixels
Decode capability	1D: UPC/EAN, UPC/EAN, ISBN/ISSN, UCC, Code 128, Code 39, Code 39 (Full ASCII), code 32, Interleaved 2of 5, Matrix 2 of 5, Discrete 2 of 5, Codabar, MSI/Plessey, Chinese 2 of 5, China Postal Code, GS1 DataBar, etc. 2D: PDF417, Micro PDF417, Data Matrix, QR, Micro QR, Aztec, etc.  UHF RFID: EPC global UHF Class 1 Gen 2/ISO 18000-6C
Scan Angle	±360°, ±60°, ±60° (Roll, Skew, Pitch)
Scan precision	≥4mil
Print contrast	20%
Prompt mode	Buzzer, LED indicator light
Interface	USB, USB-COM
Trigger mode	Manual, Continuous automatic scan and auto sensing scanning [optional]
Memory	Save over 20,000 commodity barcode (EAN-13)
Battery	5000mAh [charging time is 8h]
Current and voltage	220mA (Barcode ), 260mA(UHF RFID); 5 VDC ±10%
Work frequency	2.4GHz, 902Mhz-928MHz , 865MHz-868MHz(Optional)
Data communication distance	100m[2.4GHz] and 30m(Bluetooth) (open area)
Setting method	Scan configuration barcode

### Physical Parameters

Over dimension	L X W X H (168.3 x 66 x 87.7mm)
Weight	244g
Material	ABS+PC environmentally friendly materials

### Environmental Parameters

Working temperature	-20°C to 50°C
Storage temperature	-40°C to 60°C
Anti-drop	Withstand drop from 1.5m to concrete floor
Humidity	5% to 95% RH
IP grade	IP54
Circumstance luminance	0-100,000Lux