

1D \ 2D



# SE2000

## 2D Image scan engine

### • Excellent Identification Ability

High performance scanning module, easily decode all common one and two dimension symbologies, have good performance in scanning fuzzy, low printed contrast rate and damaged barcode.

### • Super Easy Operation and Compatibility

Easy compatible with multiple language and keyboard layout, compact size fits for many situations, and provide TTL and USB interfaces.

### • Customize Service and Easy embedded

Support customize interface, cable, and secondary development, mini dimension and ergonomics design make it could embedded in multiple devices and industries.

### • Compatible with Multiple Operating System

Work well with Linux, MAC, Windows, Android OS perfectly.

### • Wide View Scanning Angle and Decoding Performance

Wide vision angle and scanning range, excellent aiming and decoding light helps it easy to scan the bar codes in dark environment.

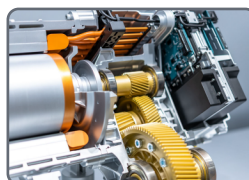
### Healthcare



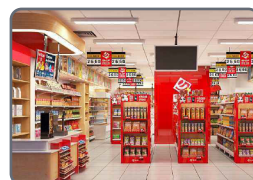
### Logistics



### Manufacturing



### Retailing



SE2000 image scan engine, integrated with our core 2D technology, has superior international advanced 2D decoding performance, with excellent performance in reading screen and printed barcode. Designed for Retail, logistics, Manufacturing, Medical store, Warehouse and other industries, easy to integrated with PDA, barcode scanner, mobile computer, hands-free scan platform, POS and other devices.

## TECHNICAL SPECIFICATIONS

### Performance Parameters

Light source	Visible red light (610-640nm) for aiming, and 6500K LED for lighting
Image sensor	CMOS
Resolution	640x480 pixels
Decode capability	1D: UPC/EAN, ISBN/ISSN, Code 128, Code 39, Code 39 (Full ASCII), code 32, code 93, code11, Interleaved 2 of 5, Matrix 2 of 5, Codabar, MSI/Plessey, Chinese 2 of 5, China Postal Code, GS1 DataBar, etc. 2D: QR code, Micro QR, PDF417, Micro PDF417, Data Matrix, Aztec, etc.
Depth of field	30-500mm
Scan Angle	±360°, ±60°, ±55° (Roll, Skew, Pitch)
Scan precision	≥4mil
Print contrast	20%
Interface	FPC 12PIN Pitch 0.5
Data communication method	USB, USB-COM, TTL
Trigger mode	Auto sensing scanning, Manual scanning
Setting method	Scan configuration barcode
Current and voltage	95mA (standby), 190mA (working), DC 3.3-5.0V

### Physical Parameters

Over dimension	L X W X H (36.6x12.9x11.8mm)
Weight	4.5g
Material	ABS+PC environmentally friendly materials

### Environmental Parameters

Working temperature	-20°C to 50°C
Storage temperature	-40°C to 60°C
Anti-drop	Withstand drop from 1.8m to concrete floor
Humidity	5% to 95% RH
Circumstance luminance	0-100,000Lux