

1D \ 2D



# C2-GC

Durable 2D Image Wireless Scanner

## • Ultra-long Distance Data Transmission

150 meters long distance data transmission, supports automatic frequency modulation and inventory mode, and has 16MB memory to save data information.

## • Professional Scanning Module

High performance scanning module, easily decode all common 1D and 2D symbologies, have good performance in scanning fuzzy, low printed contrast rate and damaged barcode.

## • Powerful Endurance Ability

2000mAh rechargeable polymer lithium battery, device could continuously work for more than 20 hours with the fully charged.

## • High Quality

Adopt high quality wires and inflaming retarding materials with the international standard, recyclable and practical shell to protect the device.

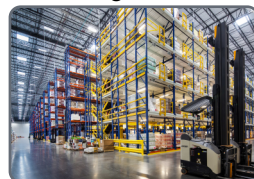
## • Industrial Grade Durability

IP54 industrial sealing grade, and bear the height of 1.5m dropping and ground impact.

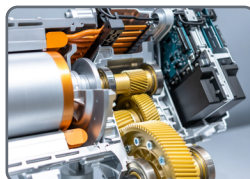
### Healthcare



### Logistics



### Manufacturing



### Retailing



C2-GC with professional high-performance CMOS scan engine, and take 2.4GHz wireless technology, with cradle for charging and receiving 2.4GHz data. Easily read printed and on-screen 1D and 2D symbologies, It designed for retail, logistics, manufacturing, healthcare , warehouse, etc.

## TECHNICAL SPECIFICATIONS

### Performance Parameters

Light source	617nm for aiming, and 5600K LED for lighting
Image sensor	CMOS
Resolution	640x480
Decode capability	1D: UPC/EAN, UPC/EAN with supplements, ISBN/ISSN, UCC, Code 128, Code 39, Code 39 (Full ASCII), code 32, Interleaved 2 of 5, Matrix 2 of 5, Discrete 2 of 5, Codabar, MSI/Plessey, Chinese 2 of 5, China Postal Code, GS1 DataBar, etc. 2D: PDF417, Micro PDF417, Data Matrix, QR, Micro QR, Aztec, etc.
Scan Angle	±360°, ±60°, ±60° (Roll, Skew, Pitch)
Scan precision	≥4mil
Print contrast	20%
Prompt mode	Buzzer, LED indicator light
Interface	USB, USB-COM
Trigger mode	Manual, Continuous automatic scan and auto sensing scanning (optional)
Memory	16MB
Battery	2000mAh (charging time is 5h)
Current and voltage	30mA (standby), 220mA (working), 5 VDC ±10%
Work frequency	2.4GHz
Data communication distance	150m (open area)
Setting method	Scan configuration barcode

### Physical Parameters

Over dimension	L X W X H (175x72x100mm(Scanner)/200x90x51mm(Cradle))
Weight	210g (Scanner), 234g (Cradle)
Material	ABS+PC environmentally friendly materials

### Environmental Parameters

Working temperature	-20°C to 50°C
Storage temperature	-40°C to 60°C
Anti-drop	Withstand drop from 1.5 m to concrete floor
Humidity	5% to 95% RH
IP grade	IP54
Circumstance luminance	0-100,000Lux