

1D



B1

Durable 1D CCD  
Scanner

#### • Long Service Life

Scan button with over 30 million times operation, and adopted ultra low power consumption.

#### • Excellent Identification Ability

High performance scanning module, easily decode all common one-dimension barcode.

#### • Convenient and Comfortable Operation

Fashionable and ergonomics design, boost work efficiency and convenient for long hours of usage, compatible with Android, Linux, Mac, Windows and other operating system.

#### • High Quality

Adopt high quality wires and inflaming retarding materials with the international standard, recyclable and practical shell to protect the device.

#### • Industrial Grade Durability

IP54 industrial grade, and bear the height of 1.8m dropping and ground impact.

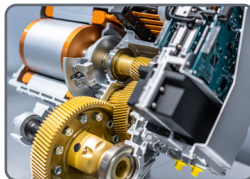
#### Healthcare



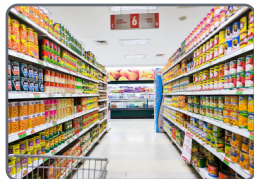
#### Logistics



#### Manufacturing



#### Retailing



B1 with professional high-performance CCD scan engine, support read printed and on-screen 1D barcode. It designed for retail, logistics, manufacturing, healthcare , warehouse, etc.

## TECHNICAL SPECIFICATIONS

### Performance Parameters

Light source	Visible red light emitting diodes (610-640nm)
Image sensor	Linear CCD
Decoding speed	≥300 times/s
Decode capability	UPC/EAN, UPC/EAN with supplements, ISBN/ISSN, UCC, Code 128, Code 39, Code 39 (Full ASCII), code 32, Interleaved 2of 5, Matrix 2 of 5, Discrete 2 of 5, Codabar, MSI/Plessey, Chinese 2 of 5, China Postal Code, GS1 DataBar, etc.
Scan Angle	±45°, ±60°, ±60° (Roll, Skew, Pitch)
Scan precision	≥4mil
Print contrast	20%
Prompt mode	Buzzer, LED indicator light
Interface	USB, USB-COM, RS232 [optional]
Trigger mode	Manual, Continuous automatic scan and auto sensing scanning [optional]
Setting method	Scan configuration barcode
Current and voltage	30mA (standby), 80mA (working), 5 VDC ±10%

### Physical Parameters

Over dimension	L X W X H (150x70x95mm)
Weight	160g (including wire)
Material	ABS+PC environmentally friendly materials

### Environmental Parameters

Working temperature	-20°C to 50°C
Storage temperature	-40°C to 60°C
Anti-drop	Withstand drop from 1.8 m to concrete floor
Humidity	5% to 95% RH
IP grade	IP54
Circumstance luminance	0-100,000Lux