

1D \ 2D



C3000

2D Image Hands-free Platform Scanner

• Professional Scanning Module

Easily decode all common 1D and 2D symbologies, have good performance in scanning fuzzy, low printed contrast rate and damaged barcode.

• Automatic Interface Detection

Enable the scanner to configure appropriate interface once connected, avoid the tedious task of scanning programming

• Convenient and Comfortable Operation

Fashionable, small and ergonomics design to provide superior operation experience, save room and boost work efficiency.

• High Quality

Adopt high quality wires and inflaming retarding materials with the international standard, recyclable and practical shell to protect the device.

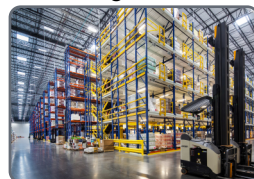
• Industrial Grade Durability

IP54 industrial grade, no worry operate device in dust and moist circumstances.

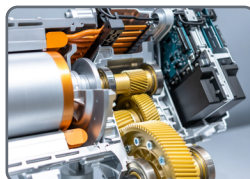
Healthcare



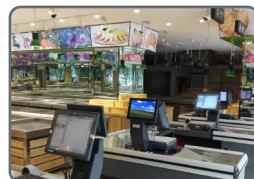
Logistics



Manufacturing



Retailing



C3000 has high performance in scan all kinds of printed barcode and on-screen barcode, with sensitive induction module for fast induction and fast reading barcode. It optimized for many industries, such as Retail, logistics, Manufacturing, Medical store, Warehouse and other fields of applications.

TECHNICAL SPECIFICATIONS

Performance Parameters

Image sensor	CMOS
Resolution	640x480 Pixels
Decode capability	1D: UPC/EAN, Code 128, Code 39, Code 39 (Full ASCII), code32, Interleaved 2 of 5, Matrix 2 of 5, Discrete 2 of 5, Codabar, Chinese 2 of 5, China Postal Code, GS1 DataBar, etc. 2D: PDF417, Micro PDF417, QR code, Micro QR, Data Matrix, Aztec, etc.
Scan Angle	±360°, ±70°, ±65° (Roll, Skew, Pitch)
Scan precision	≥4mil
Depth of field	20-550mm
Print contrast	≥20%
Prompt mode	Buzzer, LED indicator light
Interface	USB, USB-COM
Trigger mode	Auto-induction scanning
Setting method	Scan configuration barcode
Current and voltage	160mA (standby), 270mA (working), 5VDC±10%

Physical Parameters

Over dimension	L X W X H (117.2x108x138.1mm)
Weight	246g
Material	ABS+PC environmentally friendly materials

Environmental Parameters

Working temperature	-20°C to 50°C
Storage temperature	-40°C to 60°C
Anti-drop	1.5m
Humidity	5% to 95% RH
IP grade	IP54
Circumstance luminance	0-100,000Lux