

1D \ 2D



C5200

2D Wireless Hands-free Barcode Scanner

Professional Scanning Module

High performance scanning module, easily decode all common 1D and 2D symbologies, have good performance in scanning fuzzy, low printed contrast rate and damaged barcode.

Easily Switching Two Wireless Modes

2.4GHz wireless technology and Bluetooth connection, take BT connection if the connected device without USB interface, such as smart phone, ipad, PDA, POS, etc.

Super Easy Operation and Compatibility

Compatible with multiple language and keyboard layout, work well with Android, Linux, Mac, Windows and other operating system.

Ultra-long Distance Data Transmission

100m [2.4GHz] and 30m[Bluetooth] long distance data transmission, supports automatic frequency modulation and inventory mode, and has 350KB memory to save data information.

Industrial Grade Durability

IP54 industrial grade, no worry operate device in dust and moist circumstances.

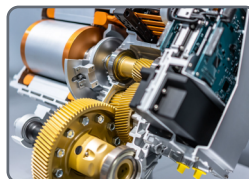
Healthcare



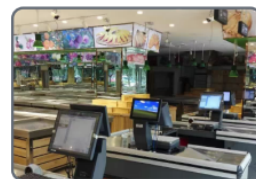
Logistics



Manufacturing



Retailing



C5200 is a wireless 2D image hands-free barcode scanner with high performance barcode scanner and fashionable product appearance. It meets all requirements of Retail, Logistics, Manufacturing, Warehouse and other fields of applications.

TECHNICAL SPECIFICATIONS

Performance Parameters

Light source	617nm for lighting
Image sensor	CMOS
Resolution	640x480 pixels
Decode capability	1D: UPC/EAN, UPC/EAN with supplements, ISBN/ISSN, UCC, Code 128, Code 39, Code 39 (Full ASCII), code 32, Interleaved 2 of 5, Matrix 2 of 5, Discrete 2 of 5, Codabar, MSI/Plessey, Chinese 2 of 5, China Postal Code, GS1 DataBar, etc. 2D: PDF417, Micro PDF417, Data Matrix, QR, Micro QR, Aztec, etc.
Scan Angle	±360°, ±65°, ±60° (Roll, Skew, Pitch)
Scan precision	≥4mil
Print contrast	20%
Prompt mode	Buzzer, LED indicator light
Interface	USB, USB-COM, 2.4G, Bluetooth (HID, SPP, BLE) (Optional)
Trigger mode	Manual, Continuous automatic scan, Auto-induction scanning
Memory	350 KB (save 20,000 barcodes data)
Battery	2000mAh (charging time is 4.5h)
Current and voltage	160mA (standby), 280mA (working), 5 VDC ±10%
Work frequency	2.4GHz
Data communication distance	100m [2.4GHz], 30m [Bluetooth (optional)] (open area)
Setting method	Scan configuration barcode

Physical Parameters

Over dimension	L*W*H (91x88x145mm)(Scanner); (95x95x20mm)(Cradle)
Weight	263g(Scanner); 61.5g(Cradle)
Material	ABS+PC environmentally friendly materials

Environmental Parameters

Working temperature	-20°C to 55°C
Storage temperature	-40°C to 60°C
Anti-drop	Withstand drop from 1.5m to concrete floor
Humidity	5% to 95% RH
IP grade	IP54
Circumstance luminance	0-100,000Lux