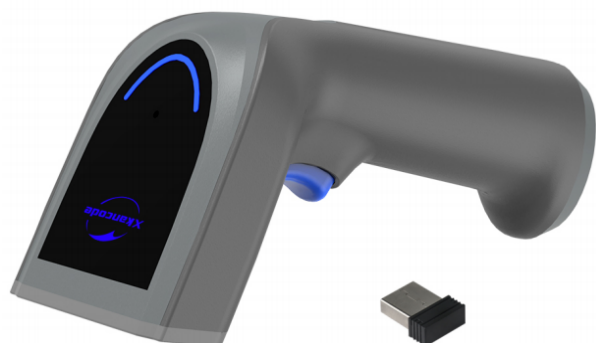


1D



K1-BG

Durable 1D CCD Wireless Scanner

• Ultra-long Distance Data Transmission

150m (2.4GHz) and 30m(Bluetooth) long distance data transmission, supports automatic frequency modulation and inventory mode, and has 350KB memory to save data information.

• Professional Scanning Module

High performance and superior resolution (2500) scanning module, easily decode one-dimension barcode, including low printed contrast rate, high density and damaged barcode.

• Easily Switching Two Wireless Modes

2.4GHz wireless technology and Bluetooth connection, take BT connection if the connected device without USB interface, such as smart phone, ipad, PDA, POS, etc.

• High Quality

Adopt high quality wires and inflaming retarding materials with the international standard, recyclable and practical shell to protect the device.

• Industrial Durability and Sealing Performance

IP54 sealing performance, and bear the height of 1.5m dropping and ground impact.

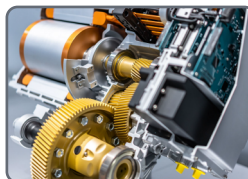
Healthcare



Logistics



Manufacturing



Retailing



K1-BG with fashionable product appearance and professional high-performance CCD scan engine, support read printed and on-screen 1D barcode. It designed for retail, logistics, healthcare, warehouse and so on.

TECHNICAL SPECIFICATIONS

Performance Parameters

Light source	632nm visible red light
Image sensor	Linear CCD
Resolution	2500 pixels
Decoding speed	≥300 times/s
Decode capability	UPC/EAN, UPC/EAN with supplements, ISBN/ISSN, Code 11, Code 128, Code 39, Code 39 (Full ASCII), code 32, Interleaved 2 of 5, Matrix 2 of 5, Discrete 2 of 5, Codabar, MSI/Plessey, Chinese 2 of 5, China Postal Code, GS1 DataBar, etc.
Scan Angle	±40°, ±60°, ±60° (Roll, Skew, Pitch)
Scan precision	≥4mil
Print contrast	20%
Prompt mode	Buzzer, LED indicator light
Interface	USB, USB-COM
Trigger mode	Manual, Continuous automatic scan and auto sensing scanning (optional)
Memory	350KB(Store over 20,000 barcode data)
Battery	2000mAh (charging time is 5h)
Current	50mA (standby), 150mA (working)
Work frequency	2.4GHz
Data communication distance	150m (2.4GHz), 30m (Bluetooth) (open area)
Setting method	Scan configuration barcode

Physical Parameters

Over dimension	L X WXH (159.2x63.5x85mm)
Weight	168g (excluding wire)
Material	ABS+PC environmentally friendly materials

Environmental Parameters

Working temperature	-20°C to 50°C
Storage temperature	-40°C to 60°C
Anti-drop	Withstand drop from 1.5m to concrete floor
Humidity	5% to 95% RH
IP grade	IP54
Circumstance luminance	0-100,000Lux