

1D \ 2D



# K2

## Durable 2D Barcode Scanner

### • Excellent Identification Ability

High performance scanning module, easily decode all common 1D and 2D symbologies, have good performance in scanning fuzzy, low printed contrast rate and damaged barcode.

### • Long Service Life

Scan button with over 30 million times operation, and adopted ultra low power consumption.

### • Super Easy Operation and Compatibility

Compatible with multiple language and keyboard layout, work well with Android, Linux, Mac, Windows and other operating system.

### • Providing Multiple Scanning Method

Manual scanning, continuous scanning with configurable scanning time interval and automatic induction scanning to meet various application scenarios.

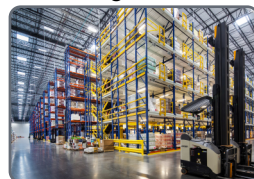
### • Industrial Grade Durability

IP54 industrial grade, and bear the height of 1.8m dropping and ground impact.

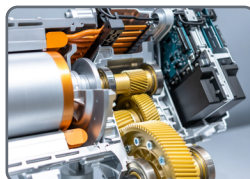
### Healthcare



### Logistics



### Manufacturing



### Retailing



K2 is an industrial grade 2D optical image scanner. It delivers industrial leading performance and durability in Retail, Logistics, Manufacturing, Warehouse and other fields of applications.

## TECHNICAL SPECIFICATIONS

### Performance Parameters

Light source	(625±10nm) for aiming, and 5600K LED for lighting
Image sensor	CMOS
Resolution	640x480/1280x800 pixels
Decode capability	1D: UPC/EAN, UPC/EAN with supplements, ISBN/ISSN, UCC, Code 128, Code 39, Code 39 (Full ASCII), code 32, Interleaved 2 of 5, Matrix 2 of 5, Discrete 2 of 5, Codabar, MSI/Plessey, Chinese 2 of 5, China Postal Code, GS1 DataBar, etc. 2D: PDF417, Micro PDF417, Data Matrix, QR, Micro QR, Aztec, etc.
Scan Angle	±360°, ±60°, ±60° (Roll, Skew, Pitch)
Scan precision	≥4mil
Print contrast	20%
Prompt mode	Buzzer, LED indicator light
Interface	USB, USB-COM, RS232 [optional]
Trigger mode	Manual, Continuous automatic scan and auto sensing scanning [optional]
Setting method	Scan configuration barcode
Current and voltage	55mA (standby), 200mA (working), 5 VDC ±10%

### Physical Parameters

Over dimension	L X W X H (159.2x63.5x85mm)
Weight	126g (excluding wire)
Material	ABS+PC environmentally friendly materials

### Environmental Parameters

Working temperature	-20°C to 50°C
Storage temperature	-40°C to 60°C
Anti-drop	Withstand drop from 1.8m to concrete floor
Humidity	5% to 95% RH
IP grade	IP54
Circumstance luminance	0-100,000Lux