

1D \ 2D



# K2-GC

## Durable 2D Image Wireless Scanner

### • Ultra-long Distance Data Transmission

150 meters long distance data transmission, supports automatic frequency modulation and inventory mode, and has 350KB memory to save data information.

### • Professional Scanning Module

High performance scanning module, easily decode all common 1D and 2D symbologies, have good performance in scanning fuzzy, low printed contrast rate and damaged barcode.

### • Powerful Endurance Ability

2000mAh rechargeable polymer lithium battery, device could continuously work for more than 25 hours with the fully charged.

### • High Quality

Adopt high quality wires and inflaming retarding materials with the international standard, recyclable and practical shell to protect the device.

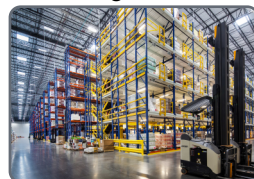
### • Industrial Grade Durability

IP54 industrial sealing grade, and bear the height of 1.5m dropping and ground impact.

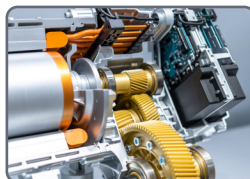
### Healthcare



### Logistics



### Manufacturing



### Retailing



K2-GC with professional high-performance CMOS scan engine, and take 2.4GHz wireless technology, with 2.4GHz data receiver receiving 2.4GHz data. Easily read printed and on screen 1D and 2D symbologies, It designed for retail, logistics, manufacturing, healthcare ,warehouse, etc.

## TECHNICAL SPECIFICATIONS

### Performance Parameters

Light source	617nm for aiming, and 5600K LED for lighting
Image sensor	CMOS
Resolution	640x480/1280x800 pixels
Decode capability	1D: UPC/EAN, UPC/EAN with supplements, ISBN/ISSN, UCC, Code 128, Code 39, Code 39 (Full ASCII), code 32, Interleaved 2 of 5, Matrix 2 of 5, Discrete 2 of 5, Codabar, MSI/Plessey, Chinese 2 of 5, China Postal Code, GS1 DataBar, etc. 2D: PDF417, Micro PDF417, Data Matrix, QR, Micro QR, Aztec, etc.
Scan Angle	±360°, ±60°, ±60° (Roll, Skew, Pitch)
Scan precision	≥4mil
Print contrast	20%
Prompt mode	Buzzer, LED indicator light
Interface	USB, USB-COM
Trigger mode	Manual, Continuous automatic scan and auto sensing scanning (optional)
Memory	350KB(Store over 20,000 barcode data)
Battery	2000mAh (charging time is 5h)
Current and voltage	35mA (standby), 220mA (working), 5 VDC ±10%
Work frequency	2.4GHz
Data communication distance	150m (open area)
Setting method	Scan configuration barcode

### Physical Parameters

Over dimension	L W H (159.2x63.5x85mm)(Scanner), 123x88x70.mm(Cradle)
Weight	170g (excluding wire)(Scanner), 110g (Cradle)
Material	ABS+PC environmentally friendly materials

### Environmental Parameters

Working temperature	-20°C to 50°C
Storage temperature	-40°C to 60°C
Anti-drop	Withstand drop from 1.5 m to concrete floor
Humidity	5% to 95% RH
IP grade	IP54
Circumstance luminance	0-100,000Lux