

1D



I1

Industrial 1D CCD Scanner

• Excellent Identification Ability

High performance scanning module, easily decode all common one-dimension barcode.

• Long Service Life

Scan button with over 30 million times operation, and adopted ultra low power consumption.

• Convenient and Comfortable Operation

Fashionable and ergonomics design, boost work efficiency and convenient for long hours of usage.

• High Quality

Adopt high quality wires and inflaming retarding materials with the international standard, recyclable and practical shell to protect the device.

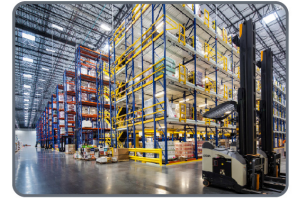
• Industrial Grade Durability

IP54 industrial grade, and bear the height of 1.8m dropping and ground impact.

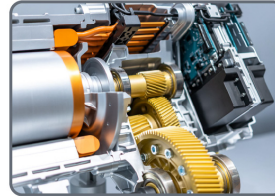
Healthcare



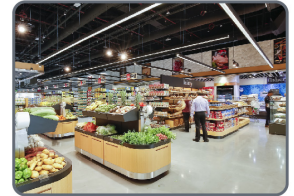
Logistics



Manufacturing



Retailing



I1 with professional high-performance CCD scan engine, support read printed and on-screen 1D barcode. It delivers industrial leading performance and durability in Retail, logistics, Manufacturing, Medical store, Warehouse and other fields of applications.

TECHNICAL SPECIFICATIONS

Performance Parameters

| | |
|---------------------|---|
| Light source | Visible red light emitting diodes (610-640nm) |
| Image sensor | CCD |
| Decoding speed | ≥300 times/s |
| Decode capability | UPC/EAN, UPC/EAN with supplements, ISBN/ISSN, UCC, Code 128, Code 39, Code 39 (Full ASCII), code 32, Interleaved 2 of 5, Matrix 2 of 5, Discrete 2 of 5, Codabar, MSI/Plessey, Chinese 2 of 5, China Postal Code, GS1 DataBar, etc. |
| Scan Angle | ±45°, ±65°, ±55° (Roll, Skew, Pitch) |
| Scan precision | ≥3mil |
| Print contrast | 20% |
| Prompt mode | Buzzer, LED indicator light |
| Interface | USB, USB-COM |
| Trigger mode | Manual, Continuous automatic scan and auto sensing scanning (optional) |
| Setting method | Scan configuration barcode |
| Current and voltage | 36mA (standby), 120mA (working), 5 VDC ±10% |

Physical Parameters

| | |
|----------------|---|
| Over dimension | L X W X H (153.2x66x110.5mm) |
| Weight | 155g |
| Material | ABS+PC environmentally friendly materials |

Environmental Parameters

| | |
|------------------------|--|
| Working temperature | -20°C to 50°C |
| Storage temperature | -40°C to 60°C |
| Anti-drop | Withstand drop from 1.8m to concrete floor |
| Humidity | 5% to 95% RH |
| IP grade | IP54 |
| Circumstance luminance | 0-100,000Lux |