

1D



I1-BGC

Superior 1D CCD Wireless Scanner

• Ultra-long Distance Data Transmission

100m(2.4G) and 30m(Bluetooth) long distance data transmission, supports automatic frequency modulation and inventory mode, and has large memory to save data information.

• Highly accurate and fast scanning

High performance scanning module, easily decode all common 1D symbologies, have good performance in scanning fuzzy, low printed contrast rate and damaged barcode.

• Powerful Endurance Ability

4800mAh rechargeable polymer lithium battery, make device could continuously work for more than 55 hours with the fully charged.

• Super Easy Operation and Compatibility

Compatible with multiple language and keyboard layout, work well with Android, Linux, Mac, Windows and other operating system.

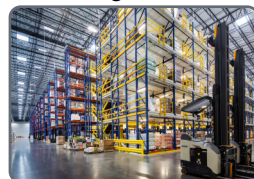
• Industrial Durability and Sealing Performance

IP54 industrial sealing grade, and bear the height of 1.5m dropping and ground impact.

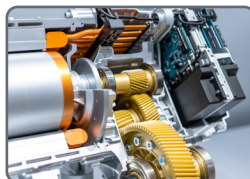
Healthcare



Logistics



Manufacturing



Retailing



I1-BGC with professional high-performance image scan engine, and take 2.4GHz and Bluetooth wireless technology, with cradle for charging and receiving 2.4GHz data. Easily read printed and on-screen 1D symbology. It designed for retail, logistics, manufacturing, healthcare, warehouse, etc.

TECHNICAL SPECIFICATIONS

Performance Parameters

Image sensor	Linear 1D CCD image
Light source	632nm visible red light
Decode speed	300 times/s
Resolution	2500
Decode capability	UPC/EAN, UPC/EAN with supplements, ISBN/ISSN, UCC, Code 128, Code 39, Code 39 (Full ASCII), code 32, Interleaved 2 of 5, Matrix 2 of 5, Discrete 2 of 5, Codabar, MSI/Plessey, Chinese 2 of 5, China Postal Code, GS1 DataBar, etc.
Scan Angle	±45°, ±60°, ±60°(Roll, Skew, Pitch)
Scan precision	≥4mil
Print contrast	20%
Prompt mode	Buzzer, LED indicator light
Interface	USB, USB-COM
Trigger mode	Manual, Continuous automatic scan and auto sensing scanning (optional)
Memory	Save over 20,000 commodity barcode (EAN-13)
Battery	4800mAh (charging time is 8h)
Current and voltage	35mA (standby), 100mA (working), 5 VDC ±10%
Work frequency	2.4GHz
Data communication distance	100m(2.4GHz) and 30m(Bluetooth) (open area)
Setting method	Scan configuration barcode

Physical Parameters

Over dimension	L X W X H (153.2x66x110.5mm[Scanner]/113.5x91x71.5mm[Cradle])
Weight	228g (Scanner), 216g (Cradle)
Material	ABS+PC environmentally friendly materials

Environmental Parameters

Working temperature	-20°C to 50°C
Storage temperature	-40°C to 60°C
Anti-drop	Withstand drop from 1.5m to concrete floor
Humidity	5% to 95% RH
IP grade	IP54
Circumstance luminance	0-100,000Lux