

1D \ 2D



# I2-BGC

## Superior 2D Wireless Scanner

### • Ultra-long Distance Data Transmission

100m(2.4G) and 30m(Bluetooth) long distance data transmission, supports automatic frequency modulation and inventory mode, and has large memory to save data information.

### • Highly accurate and fast scanning

High performance scanning module, easily decode all common 1D and 2D symbologies, have good performance in scanning fuzzy, low printed contrast rate and damaged barcode.

### • Powerful Endurance Ability

4800mAh rechargeable polymer lithium battery, make device could continuously work for more than 50 hours with the fully charged.

### • Super Easy Operation and Compatibility

Compatible with multiple language and keyboard layout, work well with Android, Linux, Mac, Windows and other operating system.

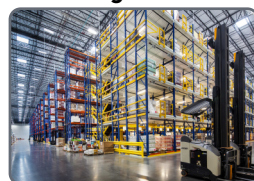
### • Industrial Durability and Sealing Performance

IP54 industrial sealing grade, and bear the height of 1.5m dropping and ground impact.

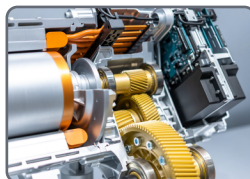
### Healthcare



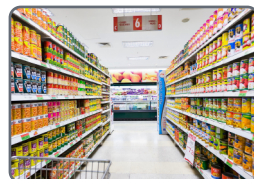
### Logistics



### Manufacturing



### Retailing



I2-BGC with professional high-performance image scan engine, and take 2.4GHz and Bluetooth wireless technology, with cradle for charging and receiving 2.4GHz data. Easily read printed and on-screen 1D and 2D symbology. It designed for retail, logistics, manufacturing, healthcare, warehouse, etc.

## TECHNICAL SPECIFICATIONS

### Performance Parameters

Image sensor	CMOS
Resolution	1280x1024
Decode capability	1D: UPC/EAN, UPC/EAN with supplements, ISBN/ISSN, UCC, Code 128, Code 39, Code 39 (Full ASCII), code 32, Interleaved 2 of 5, Matrix 2 of 5, Discrete 2 of 5, Codabar, MSI/Plessey, Chinese 2 of 5, China Postal Code, GS1 DataBar, etc. 2D: PDF417, Micro PDF417, Data Matrix, QR, Micro QR, Aztec, etc.
Scan Angle	±360°, ±60°, ±60° (Roll, Skew, Pitch)
Scan precision	≥3mil
Print contrast	20%
Prompt mode	Buzzer, LED indicator light
Interface	USB, USB-COM
Trigger mode	Manual, Continuous automatic scan and auto sensing scanning [optional]
Memory	Save over 20,000 commodity barcode (EAN-13)
Battery	4800mAh (charging time is 8h)
Current and voltage	50mA (standby), 220mA (working), 5 VDC ±10%
Work frequency	2.4GHz
Data communication distance	100m(2.4GHz) and 30m(Bluetooth) (open area)
Setting method	Scan configuration barcode

### Physical Parameters

Over dimension	L X W X H (153.2x66x110.5mm[Scanner]/113.5x91x71.5mm[Cradle])
Weight	228g [Scanner], 216g [Cradle]
Material	ABS+PC environmentally friendly materials

### Environmental Parameters

Working temperature	-20°C to 50°C
Storage temperature	-40°C to 60°C
Anti-drop	Withstand drop from 1.5m to concrete floor
Humidity	5% to 95% RH
IP grade	IP54
Circumstance luminance	0-100,000Lux