

1D \ 2D



S2-BGC

Superior 2D Wireless Scanner

• Ultra-long Distance Data Transmission

2.4GHz(150m) and Bluetooth(30m) long distance data transmission, supports automatic frequency modulation and inventory mode, and has 16MB memory to save data information.

• Highly accurate and fast scanning

High performance scanning module, easily decode all common 1D and 2D symbologies, have good performance in scanning fuzzy, low printed contrast rate and damaged barcode.

• Powerful Endurance Ability

2600mAh rechargeable polymer lithium battery, make device could continuously work for more than 35 hours with the fully charged.

• Super Easy Operation and Compatibility

Compatible with multiple language and keyboard layout, work well with Android, Linux, Mac, Windows and other operating system.

• Industrial Durability and Sealing Performance

IP54 industrial sealing grade, and bear the height of 1.5m dropping and ground impact.

Healthcare



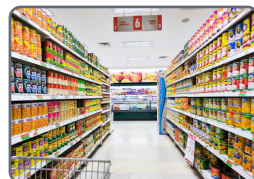
Logistics



Manufacturing



Retailing



S2-BGC with professional high-performance image scan engine, and take Bluetooth and 2.4GHz wireless technology, with cradle for charging and receiving 2.4GHz data. Easily read printed and on-screen 1D and 2D symbology. It designed for retail, logistics, manufacturing, healthcare, warehouse, etc.

TECHNICAL SPECIFICATIONS

Performance Parameters

Light source	617nm for aiming, and 5600K LED for lighting
Image sensor	CMOS
Resolution	1280x800/640x480
Decode capability	1D: UPC/EAN, UPC/EAN with supplements, ISBN/ISSN, UCC, Code 128, Code 39, Code 39 (Full ASCII), code 32, Interleaved 2 of 5, Matrix 2 of 5, Discrete 2 of 5, Codabar, MSI/Plessey, Chinese 2 of 5, China Postal Code, GS1 DataBar, etc. 2D: PDF417, Micro PDF417, Data Matrix, QR, Micro QR, Aztec, etc.
Scan Angle	±360°, ±60°, ±60° (Roll, Skew, Pitch)
Scan precision	≥4mil
Print contrast	20%
Prompt mode	Buzzer, LED indicator light
Interface	USB, USB-COM
Trigger mode	Manual, Continuous automatic scan and auto sensing scanning [optional]
Memory	16MB
Battery	2600mAh (charging time is 6h)
Current and voltage	50mA (standby), 200mA (working), 5 VDC ±10%
Work frequency	2.4GHz
Data communication distance	150m(2.4GHz) and 30m(Bluetooth) (open area)
Setting method	Scan configuration barcode

Physical Parameters

Over dimension	L X W X H (168x60x100mm[Scanner]/140x108x105mm[Cradle])
Weight	160g (Scanner), 110g (Cradle)
Material	ABS+PC environmentally friendly materials

Environmental Parameters

Working temperature	-20°C to 50°C
Storage temperature	-40°C to 60°C
Anti-drop	Withstand drop from 1.5 m to concrete floor
Humidity	5% to 95% RH
IP grade	IP54
Circumstance luminance	0-100,000Lux