

1D



FS10

1D Industrial CCD Fixed Scanner

• Excellent Identification Ability

High performance scanning module, easily decode all common one-dimension barcode, have good performance in scanning fuzzy, low printed contrast rate and damaged barcode.

• Super Easy Operation and Compatibility

Easy compatible with multiple language, keyboard layout and operating system, at the same time, provide USB and RS232 interface.

• Customize service and easy embedded

Support customize interface, cable, and secondary development, fashionable and ergonomics design and mini dimension make it could applied in multiple industries.

• High Quality

Adopt high quality wires and inflaming retarding materials with the international standard, recyclable and practical shell to protect the device.

• Industrial Grade Durability

IP54 industrial grade, and bear the height of 1.8m dropping and ground impact.

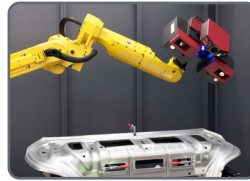
Healthcare



Logistics



Manufacturing



Retailing



FS10 1D linear fixed barcode scanner, integrated with our core CCD technology, has superior international advanced 1D decoding performance, with excellent performance in reading screen and printed barcode. Designed for Retail, logistics, Manufacturing, Medical store, Warehouse and other industries.

TECHNICAL SPECIFICATIONS

Performance Parameters

Light source	Visible red light emitting diodes (610-640nm)
Image sensor	CCD
Resolution	2500
Decoding speed	≥300 times/s
Decode capability	UPC/EAN, ISBN/ISSN, Code 128, Code 39, Code 39 [Full ASCII], code 32, code 93, code11, Interleaved 2 of 5, Matrix 2 of 5, Codabar, MSI/Plessey, Chinese 2 of 5, China Postal Code, GS1 DataBar, etc.
Scan Angle	±35°, ±60°, ±60° (Roll, Skew, Pitch)
Scan precision	≥4mil
Print contrast	20%
Prompt mode	Buzzer, LED indicator light
Data communication method	USB, RS232
Trigger mode	Auto sensing scanning
Setting method	Scan configuration barcode
Current	25mA (standby), 80mA (working)

Physical Parameters

Over dimension	L X W X H (70x51x23mm)
Weight	100g
Material	ABS+PC environmentally friendly materials

Environmental Parameters

Working temperature	-20°C to 50°C
Storage temperature	-40°C to 60°C
Anti-drop	Withstand drop from 1.8m to concrete floor
Humidity	5% to 95% RH
IP grade	IP54
Circumstance luminance	0-100,000Lux