

1D \ 2D



R2

Waterproof 2D Barcode Scanner

• Excellent Identification Ability

High performance scanning module, easily decode all common 1D and 2D symbologies, have good performance in scanning fuzzy, low printed contrast rate and damaged barcode.

• Industrial Durability and Sealing Performance

IP65 industrial sealing grade, and bear the height of 2.5m dropping and ground impact.

• Super Easy Operation and Compatibility

Compatible with multiple language and keyboard layout, work well with Android, Linux, Mac, Windows and other operating system.

• Providing Multiple Scanning Method

Manual scanning, continuous scanning with configurable scanning time interval and automatic induction scanning to meet various application scenarios.

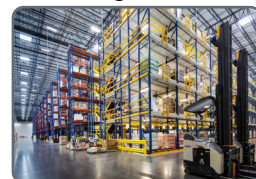
• High Quality

Adopt high quality wires and inflaming retarding materials with the international standard, recyclable and practical shell and TPU materials covered almost whole device to protect it.

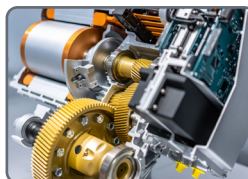
Healthcare



Logistics



Manufacturing



Retailing



R2 is an industrial grade 2D optical image scanner, with IP65 sealing performance, and makes it suitable for harsh application environments, such as manufacturing workshop, Logistics, cold chain industry, warehouse, etc.

TECHNICAL SPECIFICATIONS

Performance Parameters

Light source	[625±10nm] for aiming, and 5600K LED for lighting
Image sensor	CMOS
Resolution	1280x800/1280x1024
Decode capability	1D: UPC/EAN, UPC/EAN with supplements, ISBN/ISSN, UCC, Code 128, Code 39, Code 39 (Full ASCII), code 32, Interleaved 2 of 5, Matrix 2 of 5, Discrete 2 of 5, Codabar, MSI/Plessey, Chinese 2 of 5, China Postal Code, GS1 DataBar, etc. 2D: PDF417, Micro PDF417, Data Matrix, QR, Micro QR, Aztec, etc.
Scan Angle	±360°, ±60°, ±60° (Roll, Skew, Pitch)
Scan precision	≥3mil
Print contrast	20%
Prompt mode	Buzzer, LED indicator light
Interface	USB, USB-COM, RS232 (optional)
Trigger mode	Manual, Continuous automatic scan and auto sensing scanning (optional)
Setting method	Scan configuration barcode
Current and voltage	50mA (standby), 170mA (working), 5 VDC ±10%

Physical Parameters

Over dimension	L X W X H (184x74x93mm)
Weight	290g (excluding wire)
Material	ABS+PC environmentally friendly materials

Environmental Parameters

Working temperature	-20°C to 55°C
Storage temperature	-40°C to 60°C
Anti-drop	Withstand drop from 2.5m to concrete floor
Humidity	5% to 95% RH
IP grade	IP65
Circumstance luminance	0-100,000Lux