

1D



A3

## Industrial 1D Laser Scanner

### • Excellent Identification Ability

High performance scanning module, decoding barcode with speed of 300 times/s.

### • Long Service Life

Scan button with over 30 million times operation, and adopted ultra low power consumption.

### • Convenient and Comfortable Operation

Fashionable and ergonomics design, boost work efficiency and convenient for long hours of usage.

### • High Quality

Adopt high quality wires and inflaming retarding materials with the international standard, recyclable and practical shell to protect the device.

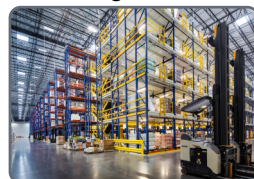
### • Industrial Grade Durability

IP54 industrial grade, and bear the height of 2m dropping and ground impact.

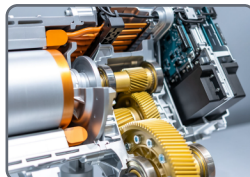
### Healthcare



### Logistics



### Manufacturing



### Retailing



A3 is industrial grade 1D laser barcode scanner, with advanced performance for data collection.

The device delivers industrial leading performance and durability in Retail, logistics, Manufacturing, Medical store, Warehouse and other fields of applications.

## TECHNICAL SPECIFICATIONS

### Performance Parameters

Light source	650nm laser
Decoding speed	≥300 times/s
Decode capability	UPC/EAN, UPC/EAN with supplements, ISBN/ISSN, UCC, Code 128, Code 39, Code 39 (Full ASCII), code 32, code 11, Interleaved 2 of 5, Matrix 2 of 5, Discrete 2 of 5, Codabar, MSI/Plessey, Chinese 2 of 5, China Postal Code, GS1 DataBar, etc.
Scan Angle	±42°, ±65°, ±52° (Roll, Skew, Pitch)
Scan precision	≥3mil
Print contrast	20%
Prompt mode	Buzzer, LED indicator light
Interface	USB, USB-COM
Trigger mode	Manual, Continuous automatic scan and auto sensing scanning (optional)
Setting method	Scan configuration barcode
Current	25mA (standby), 95mA (working)

### Physical Parameters

Over dimension	L X W X H (102x73x182mm)
Weight	172g
Material	ABS+PC environmentally friendly materials

### Environmental Parameters

Working temperature	-20°C to 50°C
Storage temperature	-40°C to 60°C
Anti-drop	Withstand drop from 2m to concrete floor
Humidity	5% to 95% RH
IP grade	IP54
Circumstance luminance	0-100,000Lux